

**Lake Waynoka Security Department
Monthly Activity Report**

January 2014

- 1. Activity Report**
- 2. Enforcement Action Report**
- 3. Gate/Grinder Pump Report**
- 4. Animal Complaints**
- 5. Crime/Activity Trends Narrative**
- 6. Vehicle Activity Report**

***Lake Waynoka
Ranger - Security Report***



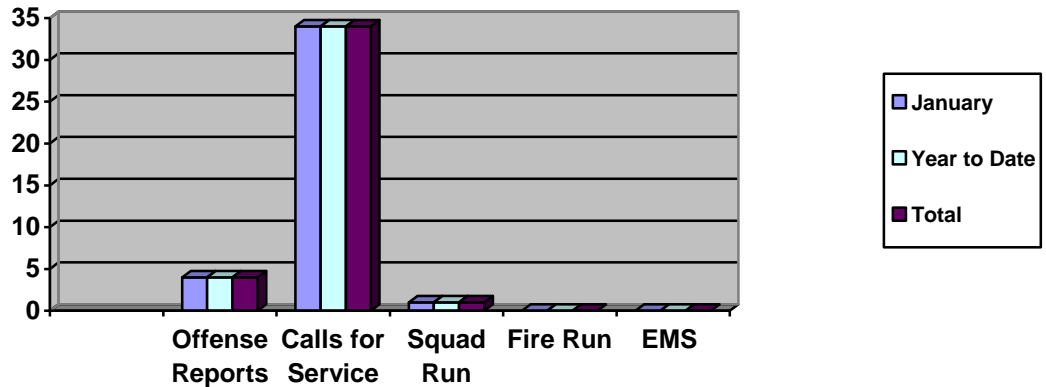
Lake Waynoka Security



Lake Waynoka Ranger - Security

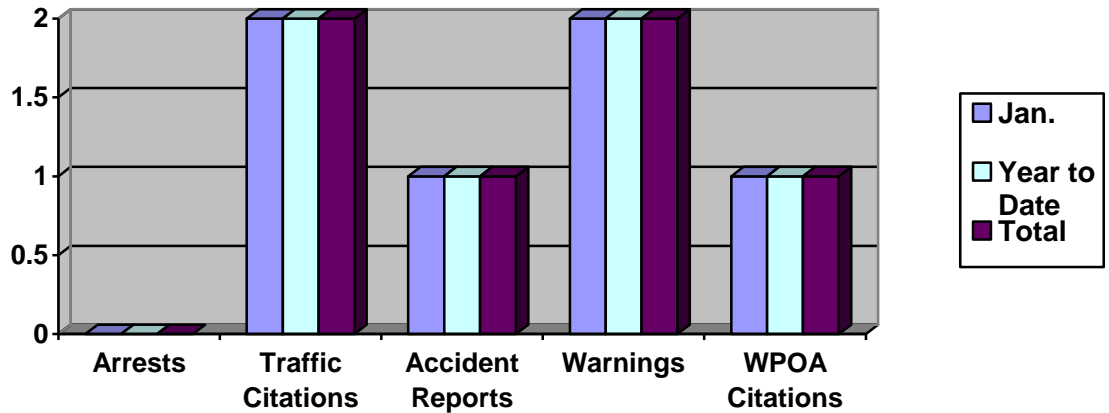
Activity Report

The following tables represent the total number of ranger/security activities by the Lake Waynoka Security Department in selected categories. The arrest activity provides a current month and a year to date comparison for activity and a total number of activities completed to date. Emergency Medical Service (EMS) calls are those calls where initial medical assessment and/or emergency treatment are provided by in-house Ranger or Security personnel.



Enforcement Action Report

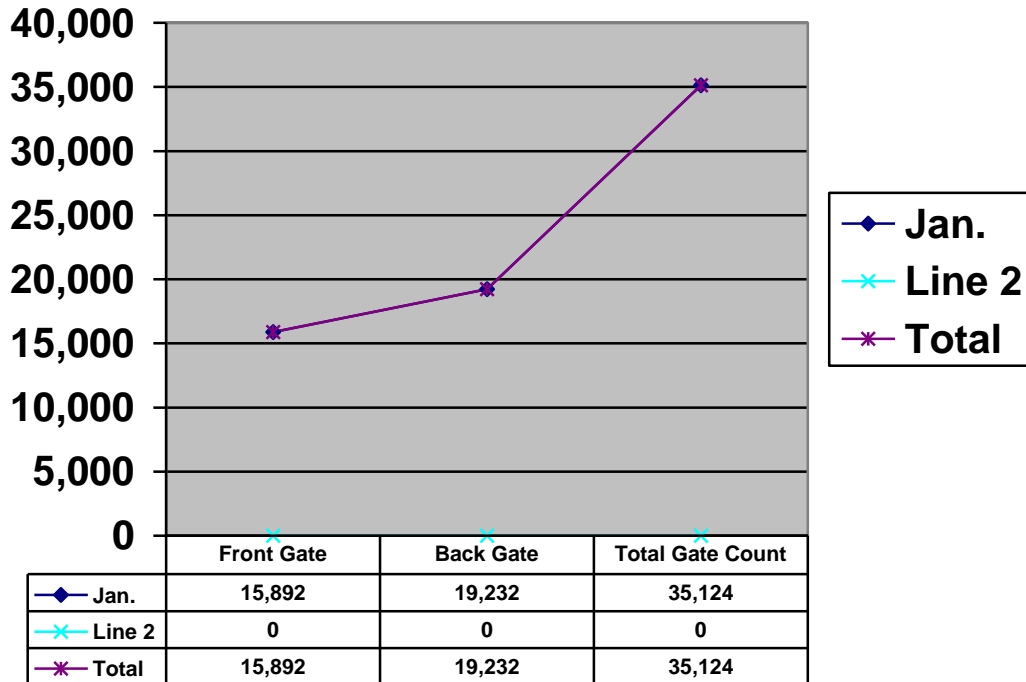
The following table represents the number of arrests, traffic citations, accident reports, written warnings and WPOA citations made by the Lake Waynoka Security Department. The numbers provided is presented for the current month and the total number of enforcement actions taken to date.



Lake Waynoka Ranger - Security

Gate Count Report

The following table represents the vehicle count completed by the Lake Waynoka Security Department in the last two months and is divided between front and rear gate counts. The total number of vehicle counts to date is also presented for review.



Security and Grinder Pump Checks

The following table provides the number of security checks completed on WPOA property and the number of grinder pumps displaying trouble alarms reported by security. The numbers are reported by month for the last (2) months with a year to date total.

Month	Security Check	Grinder Pump Check
January	821	14
	0	0
Total	821	14

Lake Waynoka Ranger - Security

Animal Complaints

The following table provides information on animal complaints received for the last (2) months. Animal complaints are tracked by (3) different types. Animal complaint actions vary from removal/neutralization to trapping activities. Beaver activity increased during the last 30 days.

	Canine	Beavers Trapped	Fowl/Animal
January	5	0	1
	0	0	0
Total	5	0	1

Crime Trend Narrative

During the month of January, one burglary was reported and is currently under investigation. The only increase in specific incidents noted were reports of vehicles going off of the road which was attributed to weather conditions.

Vehicle Activity Report

The following table presents the current miles accumulated on the assigned vehicles. The table below provides a two month comparison of miles accumulated during vehicle operation.

Month	Patrol Vehicle Year/#	Starting Miles	Ending Miles	Miles Driven	Gas Used
Jan.	2011(#1191)	47,049	48,012	963	73.0
Jan.	2004(#1192)	154,590	155,543	953	108.3
	2011(#1191)				
	2004(#1192)				

Patrol Boat Maintenance

The patrol boat is in the process to be winterized for the winter. No patrol was done for the month of December.